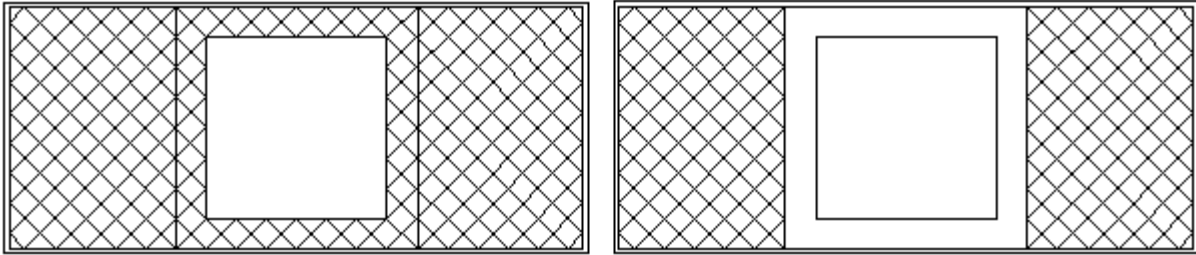


Instructions for making pillow

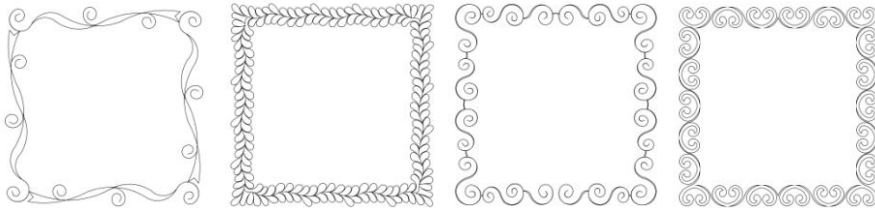
1. Load muslin or throwaway fabric for backing, batting and pillow fabric on machine.
2. Choose either the pillow with the crosshatched flange or the plain flange.



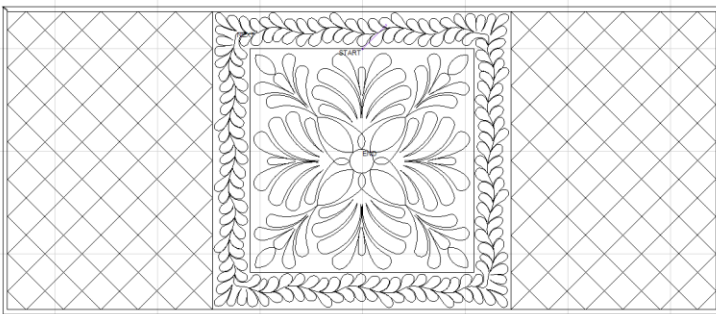
3. Choose a block pattern for the center



and if you chose the plain flange you may choose a pillow border.

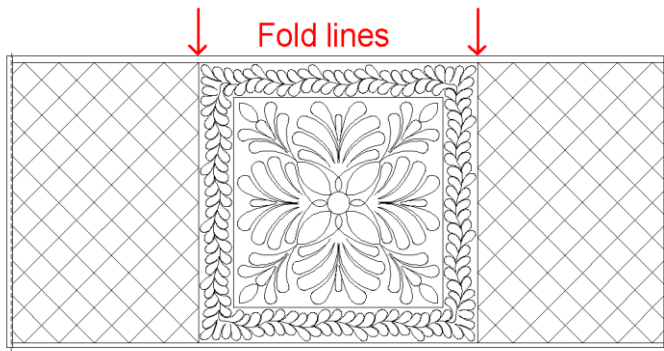
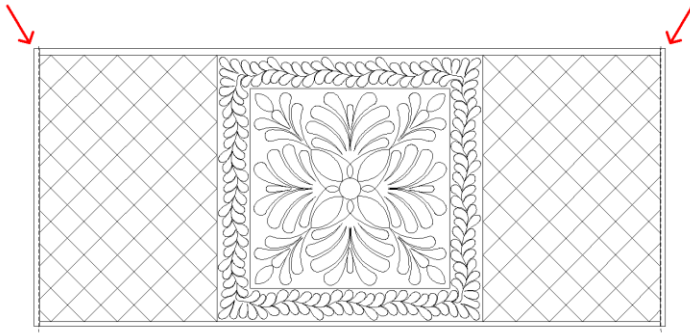


4. Line all the patterns up on the machine and quilt.

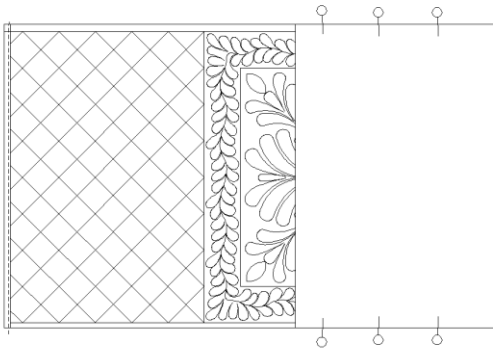


5. Take off the machine, and trim on outside line. You will finish on your domestic machine.

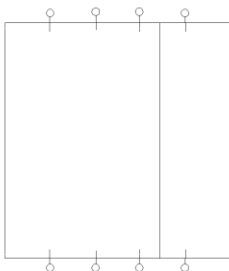
6. Fold back left and right edges and top stitch to create a finished edge on both sides.



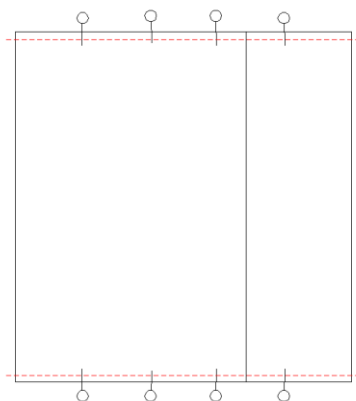
7. Fold right side in, right sides together along stitched flange line, pin.



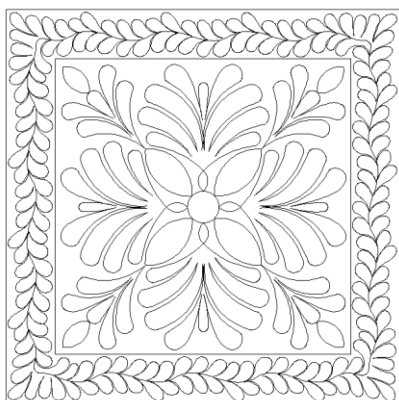
8. Fold left side in, right sides together along stitched flange line, pin.



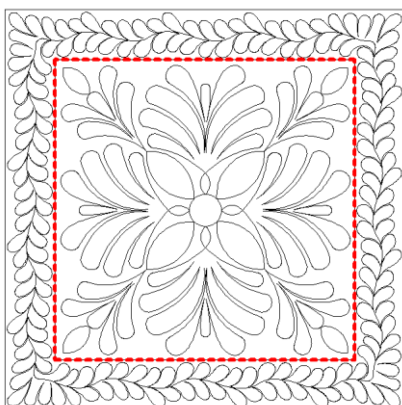
9. Stitch across top and bottom on the stitching line just next to the crosshatching. (The 2 sides overlap in the middle)



10. Turn right side out.



11. Stitch on the inside flange border.



12. Put in pillow form and you are done.